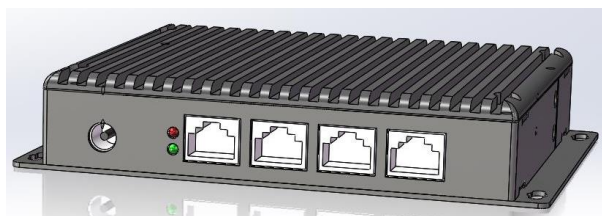
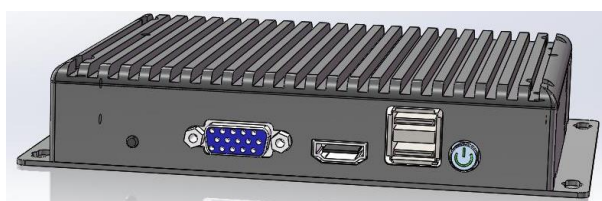


# EPC-1113

Intel® High performance computer



## Characteristics

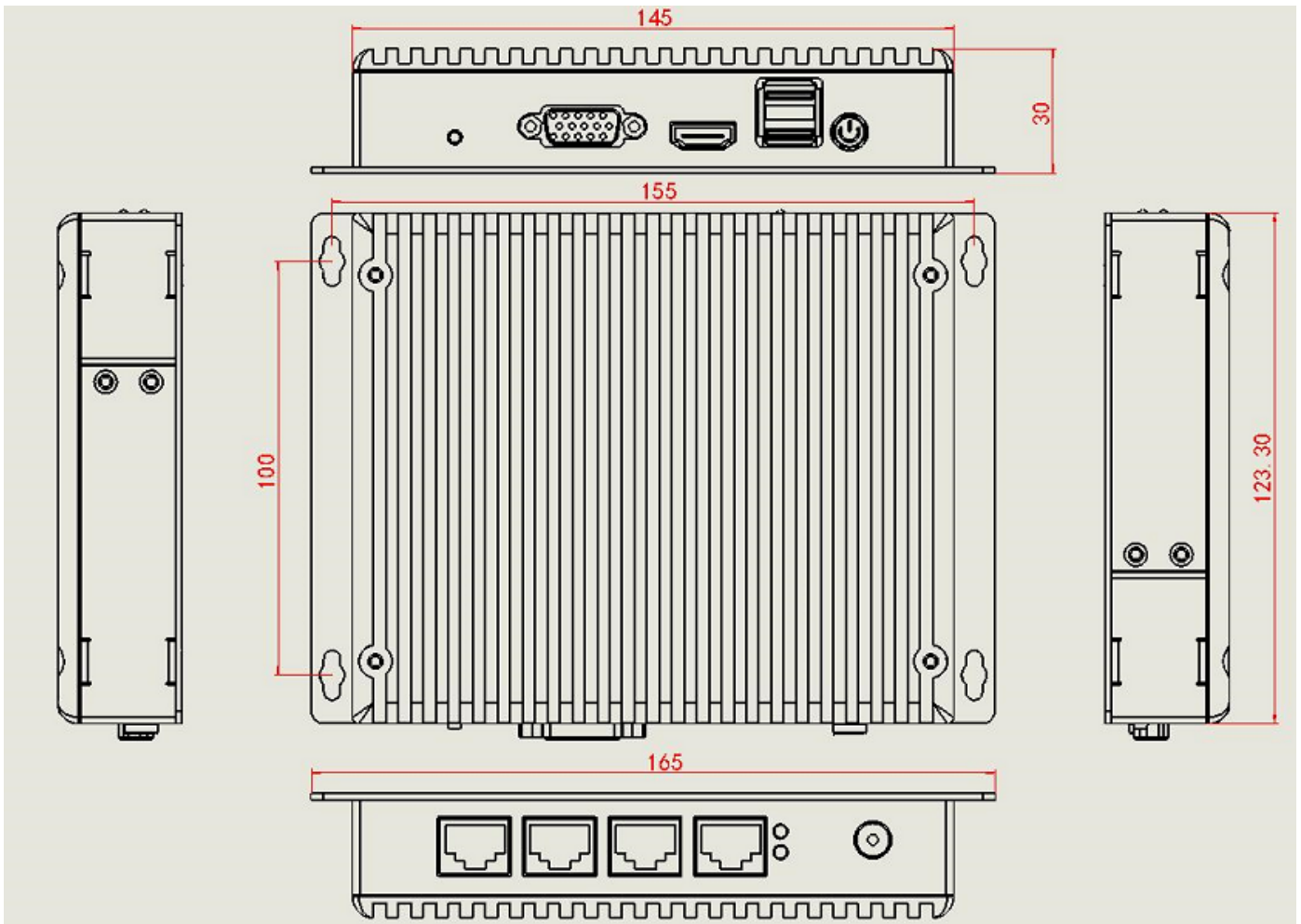
- Multi-network port embedded computer
- Dual display: HDMI+VGA Synchronous or asynchronous display
- Expansion - Mini-PCle
- Fanless Design
- Wide temperature

The EPC-1113 is a multi-network port embedded computer. The product is made of aluminum alloy and has a rich I/O interface. It can be used in fixed places or on the move. It can adapt to all kinds of harsh environments, such as wheeled and crawler-type cars. In railway transportation, it can also be installed vertically or horizontally through a fixed base. Customized products can be realized according to the customer's environment and application fields.

EPC-1113		
Processor System	CPU	Intel® Celeron™ Processor J1900 Quad Core
	Frequency	2.0GHz (Max 2.42GHz)
	L2	2MB
	BIOS	EFI BIOS
RAM	Technology	Single channel DDR3 1066/1333/1600MHz
	Capacity	8 GB
	Socket	DDR3 SODIMM 204 Socket
Graphics	Graphic engine	Intel HD Graphics
	Dual LVDS	Support dual channel 24-bit output, the highest resolution 1920 x 1080
	VGA	The highest resolution 2048 x 1536
	HDMI	The highest resolution 1920 x 1080
	Dual display	HDMI+VGA Synchronous or asynchronous display
I/O interface	Interface	1*VGA, 1*HDMI, 1*USB2.0, 1*USB3.0, 4*LAN, 1*Quick button, 1*Reset
Ethernet	Controller	4* Intel I211AT 10 / 100 / 1000 Mbps, RJ45
Cooler	Cooler	Aluminum fanless radiator
Expansion	Mini-PCle	1*Mini-PCle slot, supports PCIe and USB
Hardware monitor	WatchDog Timer	Output System reset, Programmable counter from 1 ~ 255 minutes/ seconds
Support System	OS	WIN7/10/Linux
Storage	SATA	1 x SATAII Slot, the maximum transmission rate 3Gb/s
	M-SATA	1 x Mini-PCle M-SATA Socket, supports SANDISK protocol, the max transmission rate 3Gb/s
	EMMC	Onboard 32/64/128G EMMC chipset (option)
Power	Power Input	Single Input DC12V, +/-5%
	Power TDP	20W
Working environment	Operating temp.	-20°C ~ +60°C
	Storage temp.	-40°C ~ +85°C
	Operating Humidity	0% ~ 90% ( non-condensing)
	Storage Humidity	0% ~ 90% ( non-condensing)
Dimensions	W :D :H	165 x 100 x 30 mm
	Weight	2.5 KG

## Dimension

Unit: mm



## Ordering Information

Model	Describe
MPC-1113-A	J1900 8GB 64GB (SDD) DC12V
MPC-1113-B	J1900 8GB 128GB (SDD) DC12V

Name	Describe
Power Cords, adapters	DC 12V, L=1.8m
Mounting Kits	Cable
Instructions	1
Drive Disc	1

Option	Function
EMMC	Onboard 32/64/128G EMMC chipset