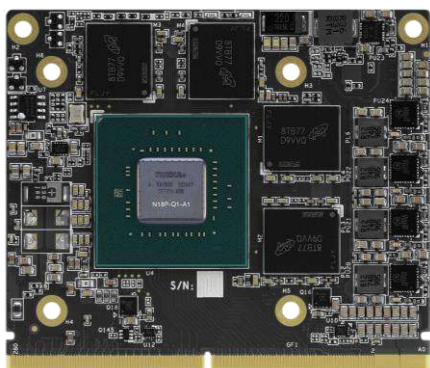


M3P2000-LN

Features

- Powered by Quadro Embedded P2000 GPU.
- 768 new-gen. Pascal architecture CUDA cores.
- DisplayPort 1.2 Certified, DisplayPort 1.3/1.4 Ready.
- Support NVIDIA CUDA Toolkit 8.0, CUDA Compute version 6.1, DirectX 12, OpenGL 4.5 and Vulkan 1.0.
- Ideal for medical imaging, gaming and deep learning applications.

Specifications



GPU Engine Specs

GPU	NVIDIA Quadro P2000
GPU Clock (Base/Boost)	1455/1480 MHz
NVIDIA CUDA Cores	768
BIOS Version	TBD
Floating Point Performance	2.3 TFLOPS SP Peak

Memory Specs

Memory Size	4GB GDDR5
Memory Clock	6.0 Gbps
Memory Interface Width	128-bit
Memory Bandwidth (GB/sec)	96

Feature Support

Bus Support	PCI Express 3.0
Open GL	4.5
DirectX	12
Open CL	1.2
Operation System	Windows 7 – 10 64-bit Linux 64-bit

Display Support

Max. Digital Display Support	7680x4320
Max. Analog Display Support	Not Support

Display Interface

DP_A: DisplayPort1.4
DP_B: DisplayPort1.4
DP_C: DisplayPort1.4
DP_D: DisplayPort1.4

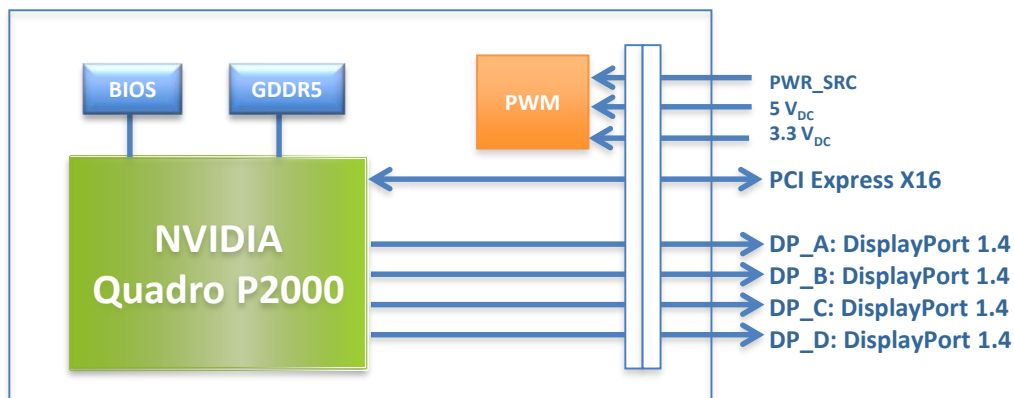
Power Specs

Max. Board Power Consumption (W)	58 W
----------------------------------	------

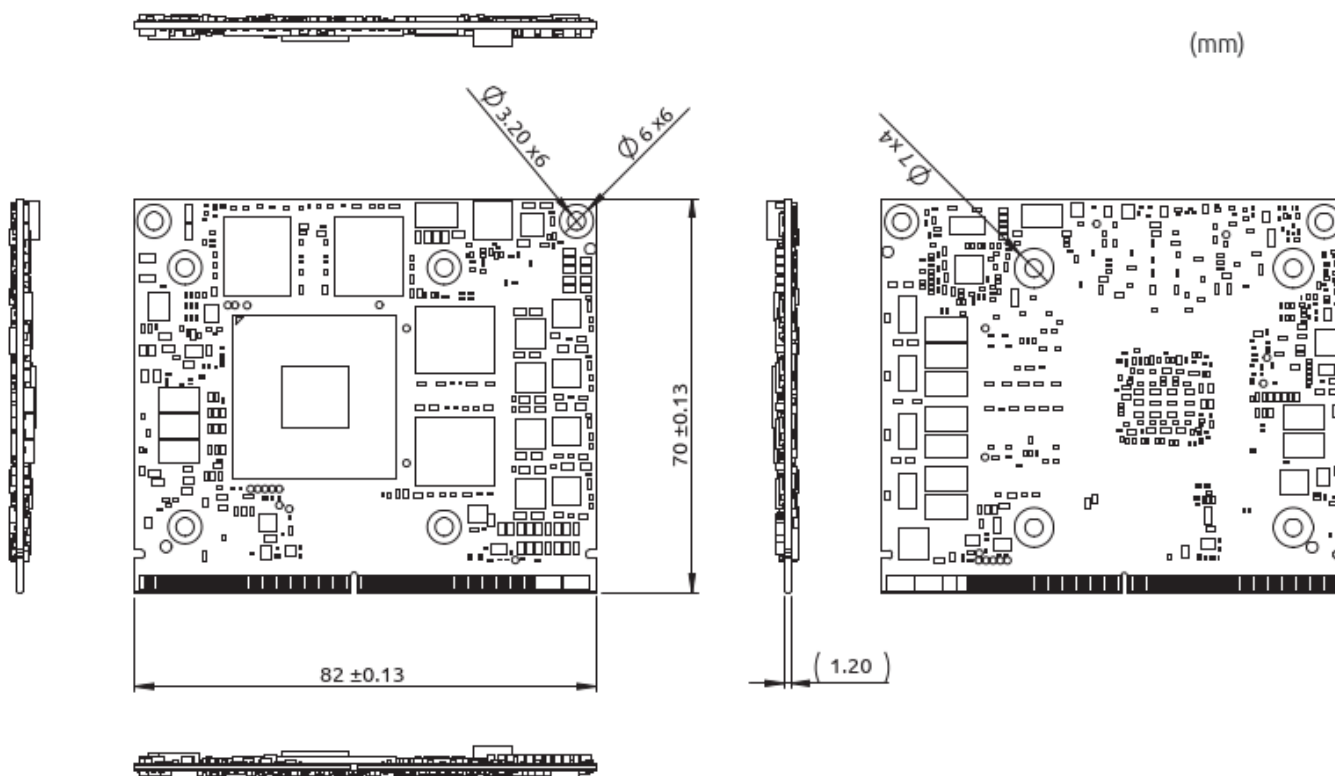
Dimensions

Form Factor	MXM graphics module version 3.1, Type A
Length	70 mm
Height	82 mm

Block Diagram



Mechanical



Ordering Information

Module Number	Description
M3P2000-LN	MXM3.1 Type A, NVIDIA Quadro P2000, 4GB GDDR5, 0°C to +55°C
M3P2000-LN-A	MXM3.1 Type A, NVIDIA Quadro P2000, 4GB GDDR5, -40°C to +85°C